

FIRE-CRYER® EXTINGUISHING CONTROLLER

The Fire-Cryer® Extinguishing Controller (EP2) allows the integration of Fire-Cryer® sounders with gas suppression systems, delivering the proven effectiveness of voice enhanced audible signalling.

By sensing the voltage and pulsing applied to the 1st and 2nd stage extinguishing panel outputs it enables three separate 'stage' voice messages and a 'hold' message to be broadcast using Fire-Cryer® voice sounders with integral beacon.

(See 'Message Option D' for the standard message set).

Custom messages are available.

TECHNICAL INFORMATION

Requires a 24 V dc supply from the control panel or an auxiliary power supply.

Process flow for all alarm stages:

1. Quiescent stage (board energised).
2. Constant 24 V dc applied to S1 or S2 inputs, the 1st stage message broadcast.
3. Pulsed 24 V dc applied to 2nd Stage input, pulse frequency 1 second on & 1 second off, stage 2 message is broadcast.
4. Constant 24 V dc applied to 2nd Stage input, 3rd stage message delivered.
5. Pulsed 24 V dc applied to 2nd Stage input, pulse frequency 1 second on & 2 seconds off, HOLD message is broadcast.

Please note that each stage will override the previous stage. For stages 2, 3 and HOLD either the S1 or S2 circuits must be constantly energised at all times.

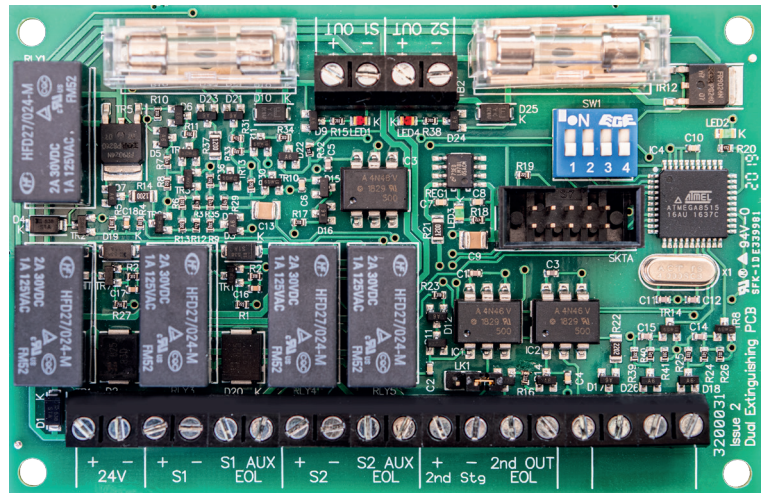
It is imperative that the trigger configuration is confirmed with Vimpex when ordering the EP2, as our customisation team implement these software changes during the packing process and cannot be altered once on site.

Each sounder circuit is rated to 1 A. Once installed, the EP2 is essentially seen by the control panel as a field device, and is monitored for faults just like any sounder would be.

EP2 can additionally accommodate Auxiliary End of Line devices for both sounder circuits and the stage 2 input to prevent periodic EOL faults being signalled on the control panel (these must be the same impedance value as the true EOL devices).

EP2 is compatible with all Fire-Cryer® products.

Please view page 2 for example diagram



SPECIFICATION

Weight:	0.10 kg
Dimensions (L x W x H):	110 mm x 72 mm x 15 mm
Pitch Dimensions (L x W):	102 mm x 63.5 mm
Operating Voltage:	20 - 28 V dc
Current Consumption (Monitoring):	18 mA
Current Consumption (Alarm):	60 mA + Sounder Load
Number of Fixing Holes:	4
Fixing Point Diameter:	3.88 mm
Maximum permitted load per sounder circuit:	1 A at 24 V dc

PART NUMBER

- FC3/EP2

FIRE-CRYER® EXTINGUISHING CONTROLLER



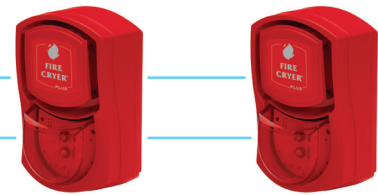
EXAMPLE DIAGRAM

Installation example using Kentec XT Control Panel

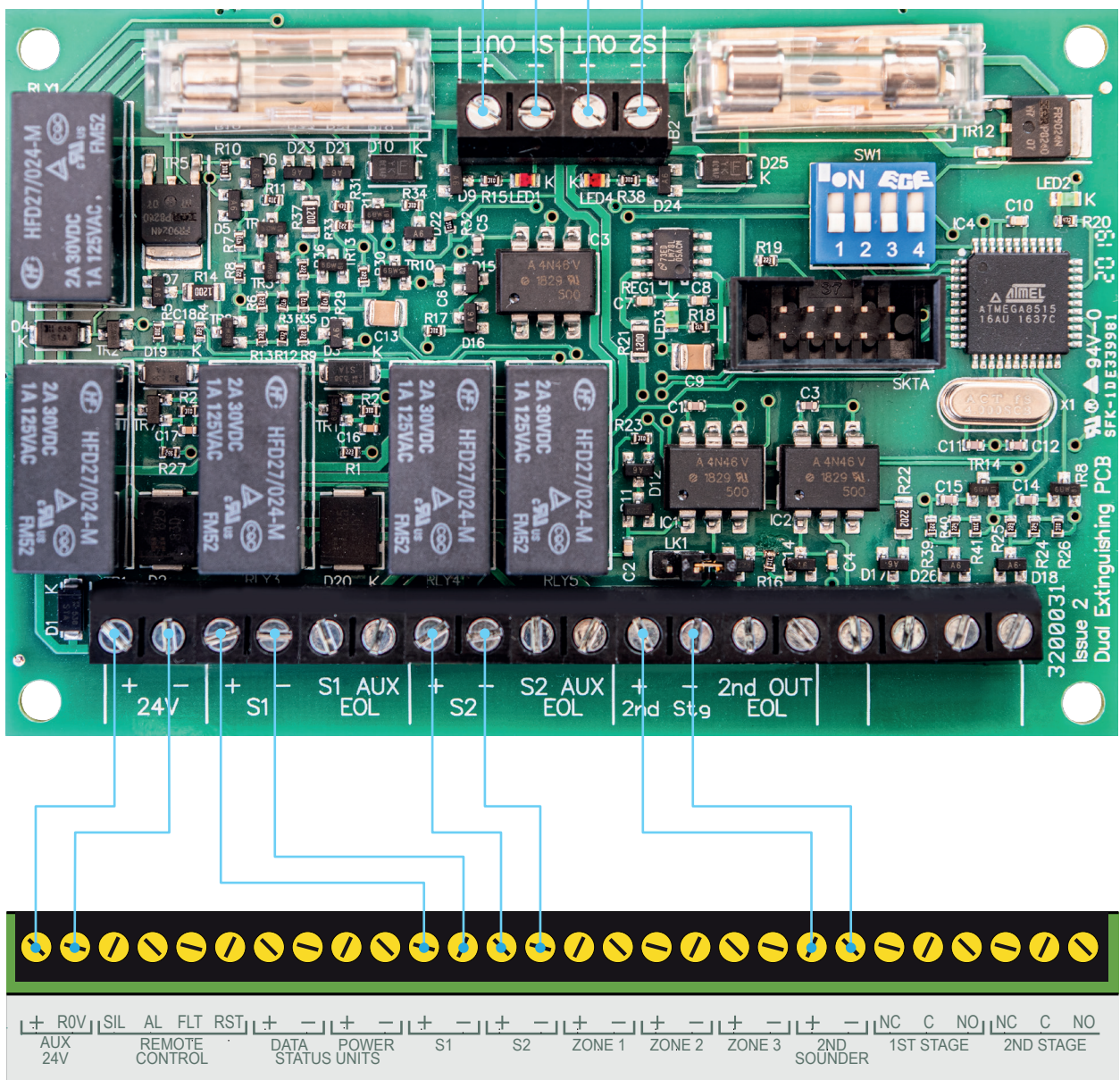
*All variants of Fire-Cryer® together with the EP2 Controller must be uploaded with the same message sequence.



Maximum 25 Fire-Cryers® without integral strobes



Maximum 12 Fire-Cryers® with integral strobes



DS/3700008/ISS 3

We reserve the right to change or amend any design or specification in line with our policy of continuing development and improvement.

Vimpex LTD
Star Lane, Great Wakering,
Essex SS3 0PJ, UK
t. +44 (0) 1702 216999
e. sales@vimpex.co.uk
www.vimpex.co.uk

Vimpex Interguard AB
t. +46 (0) 36 37 10 65
e. sales@vimpex.se

